



North-South Cycle Superhighway (CS6) Section 1 - Farringdon Street

North - South Cycle Superhighway continues south to Elephant & Castle (in construction)

Continued on Section 2

Stonecutter Street closed for traffic.
Area impacted by another development - not part of this consultation

Consulate parking bay

Bus stop bypass for cyclists

Loading /disabled bay

Stepped cycle track

Relocated taxi parking bay

ST. BRIDE STREET

FARRINGDON STREET

HARP ALLEY

STONECUTTER STREET

FARRINGDON STREET

OLD FLEET LANE

BEAR ALLEY

NEWCASTLE CLOSE

TURNAGAIN LANE

- Key:
- North-South Cycle Superhighway
 - Existing footway or traffic island
 - New footway or traffic island
 - Existing kerbline removed
 - Signalised pedestrian or pedestrian/cycle crossing
 - Contrasting coloured surface at informal crossing
 - Bus stop
 - New cycle parking
 - Existing road markings
 - New road markings
 - Trees
 - Development not part of consultation
 - Santander Cycle Hire docking station
 - Direction of Cycle Superhighway

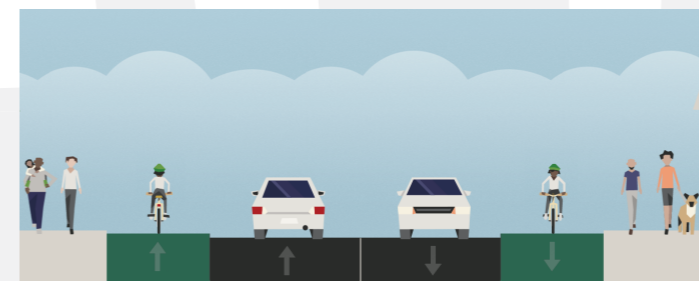
Existing loading / disabled bay

Existing taxi parking bay

Existing disabled bay

Signalised cycle crossing

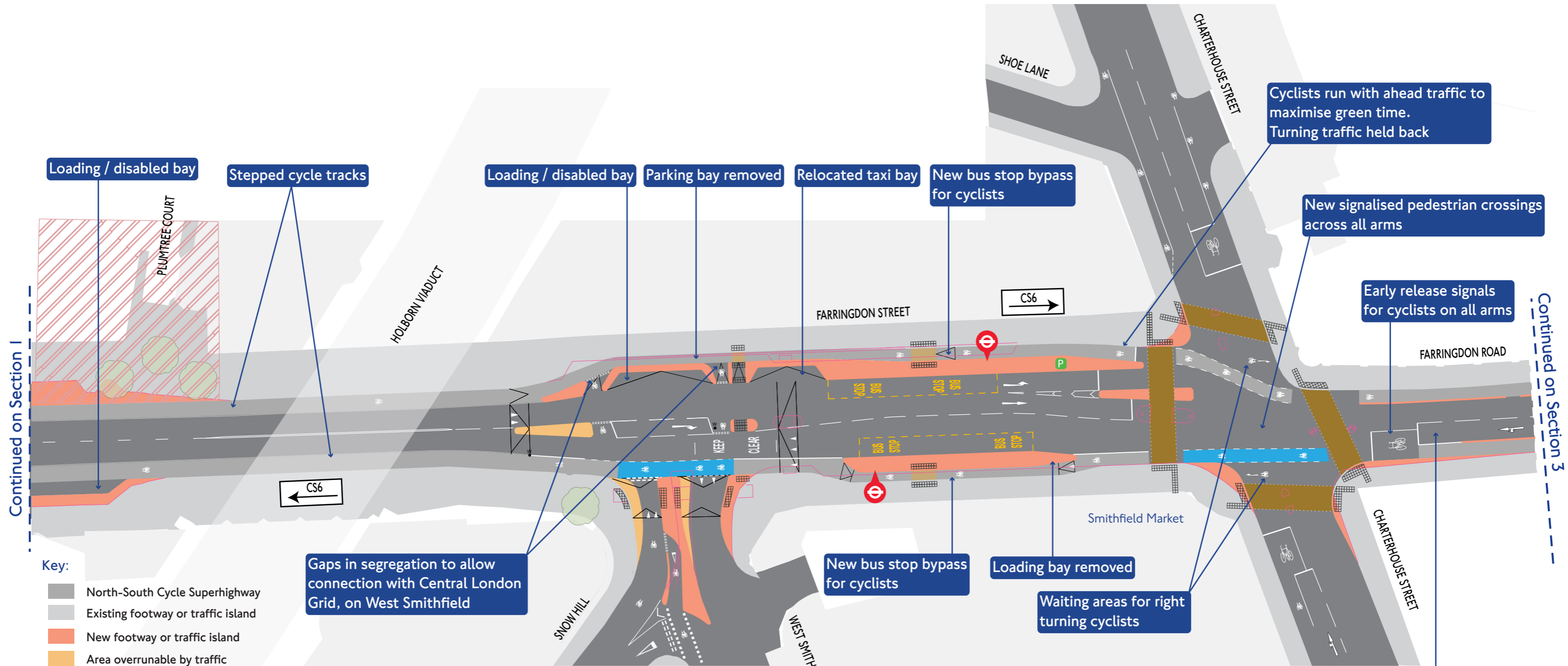
Relocated motorcycle parking



Stepped cycle track

Section A-A

North-South Cycle Superhighway (CS6) Section 2 - Farringdon Street



Continued on Section 1

Continued on Section 3

Key:

- North-South Cycle Superhighway
- Existing footway or traffic island
- New footway or traffic island
- Area overrunable by traffic
- Existing kerbline removed
- Signalised pedestrian or pedestrian/cycle crossing
- Contrasting coloured surface at informal crossing
- ⊖ Bus stop
- P New cycle parking
- Existing road markings
- New road markings
- Trees
- Development not part of consultation
- Direction of Cycle Superhighway

Connection to proposed Central London Grid - not part of this consultation

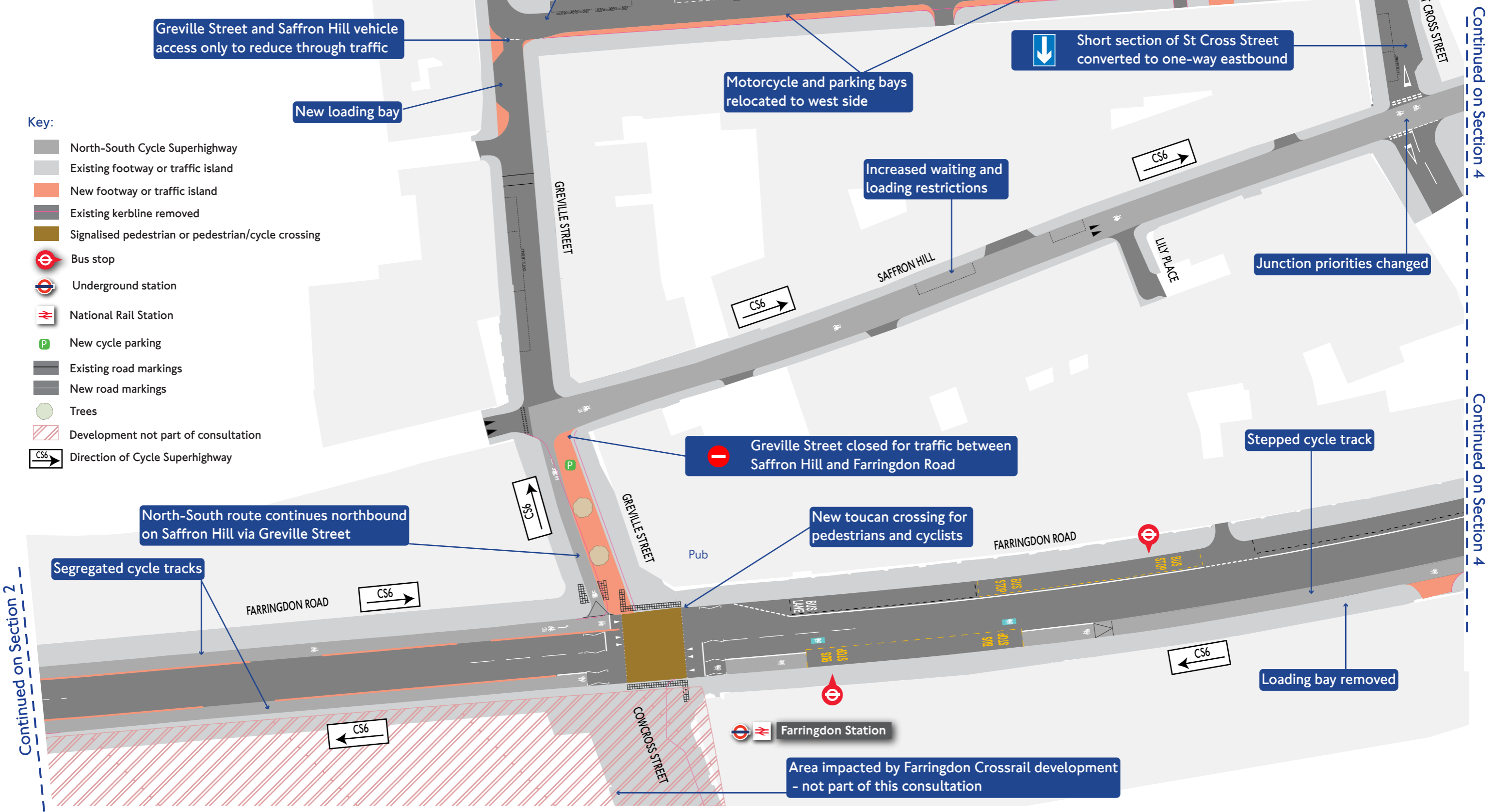
Banned right turn into Charterhouse Street (West)

North-South Cycle Superhighway (CS6) Section 3 - Farringdon Road and Saffron Hill



For detailed changes to parking, waiting and loading restrictions see accompanying text

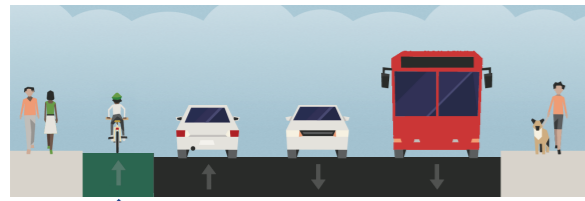
- Key:
- North-South Cycle Superhighway
 - Existing footway or traffic island
 - New footway or traffic island
 - Existing kerblines removed
 - Signalised pedestrian or pedestrian/cycle crossing
 - Bus stop
 - Underground station
 - National Rail Station
 - New cycle parking
 - Existing road markings
 - New road markings
 - Trees
 - Development not part of consultation
 - Direction of Cycle Superhighway



Continued on Section 2

Continued on Section 4

Continued on Section 4



Stepped cycle track

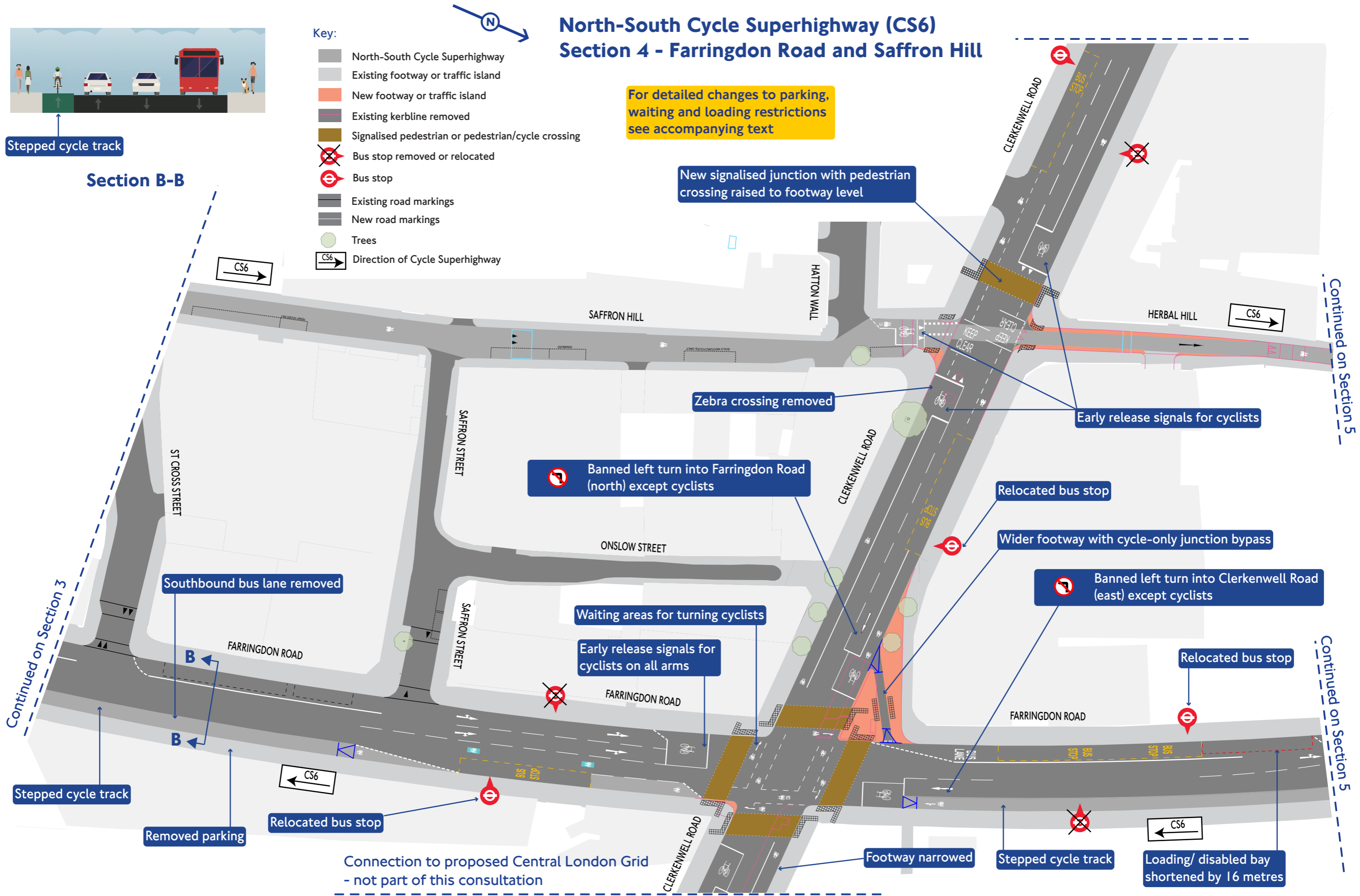
Section B-B

Key:

- North-South Cycle Superhighway
- Existing footway or traffic island
- New footway or traffic island
- Existing kerbline removed
- Signalised pedestrian or pedestrian/cycle crossing
- Bus stop removed or relocated
- Bus stop
- Existing road markings
- New road markings
- Trees
- Direction of Cycle Superhighway

North-South Cycle Superhighway (CS6) Section 4 - Farringdon Road and Saffron Hill

For detailed changes to parking, waiting and loading restrictions see accompanying text



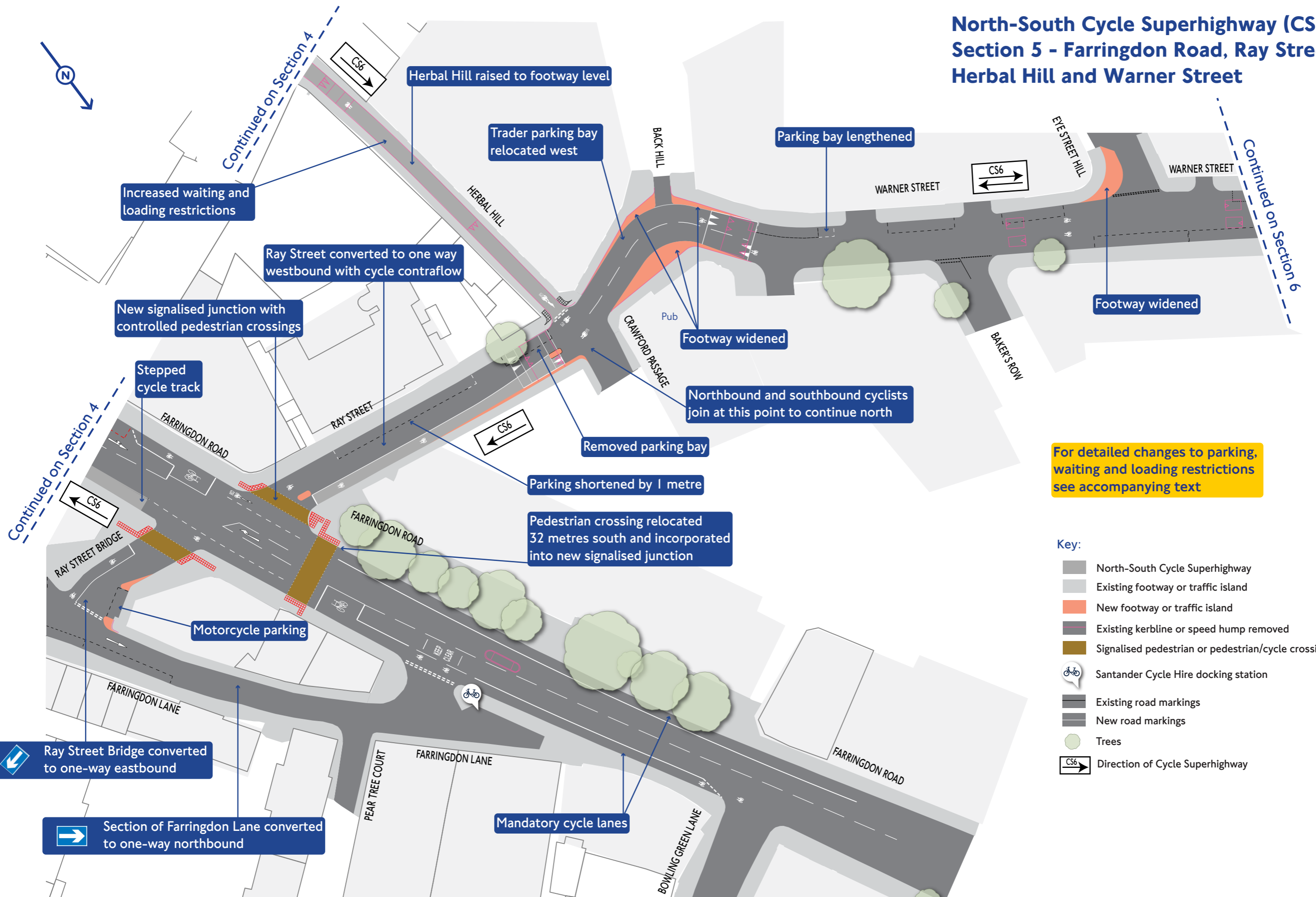
Continued on Section 3

Continued on Section 5

Continued on Section 5

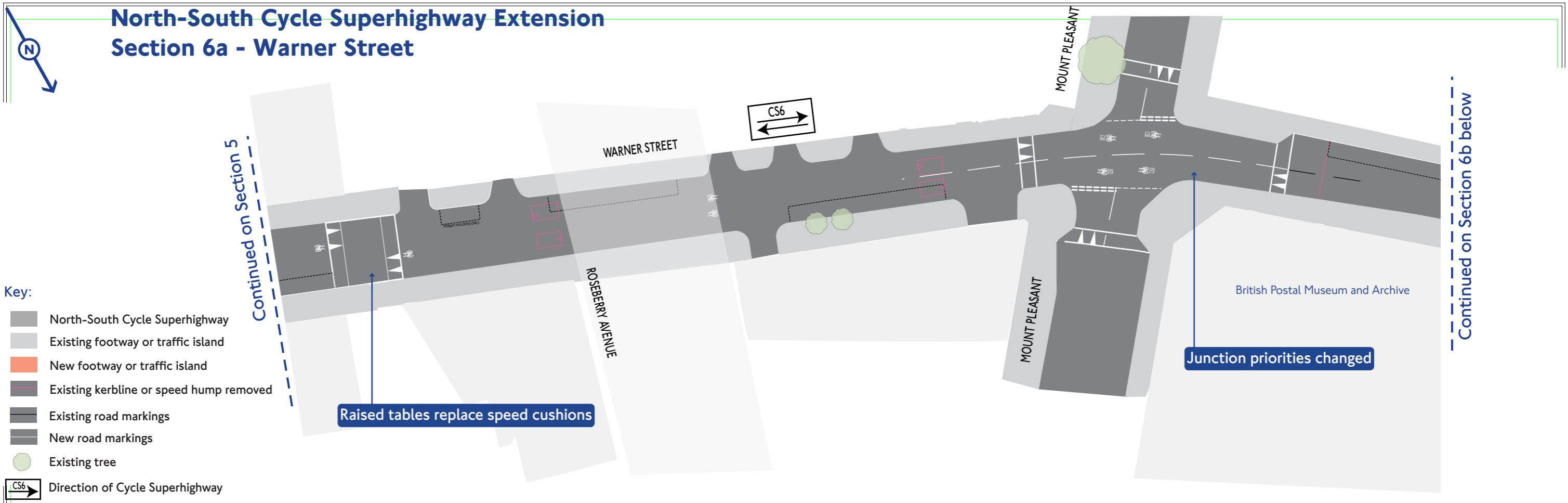
Connection to proposed Central London Grid - not part of this consultation

North-South Cycle Superhighway (CS6) Section 5 - Farringdon Road, Ray Street, Herbal Hill and Warner Street

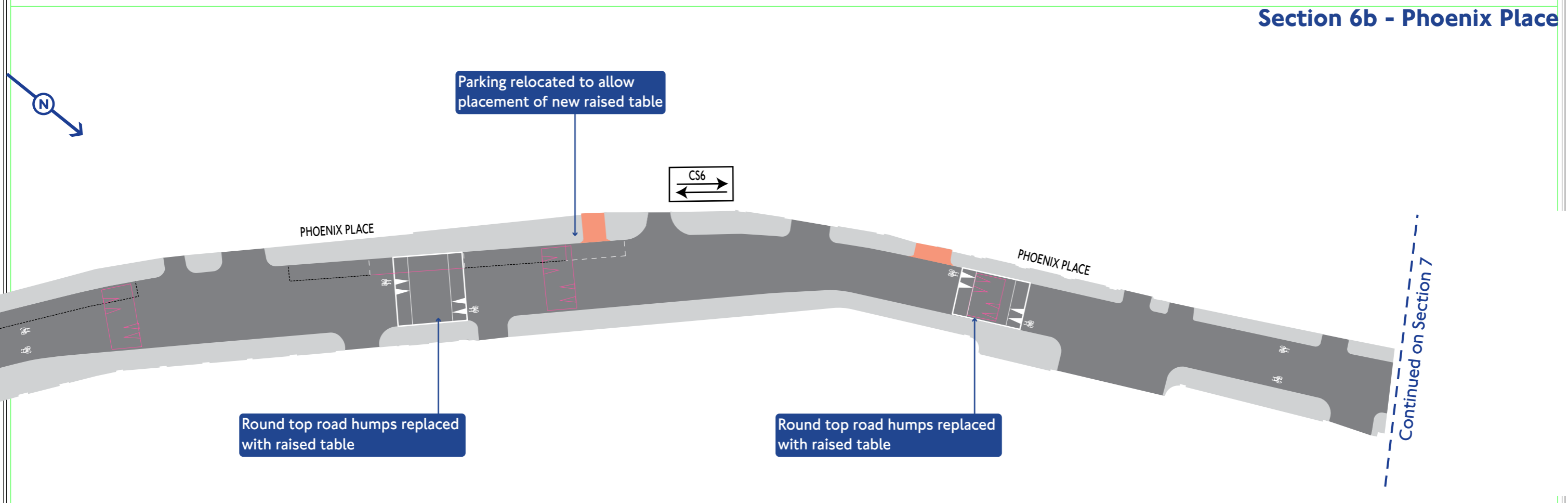


For detailed changes to parking, waiting and loading restrictions see accompanying text

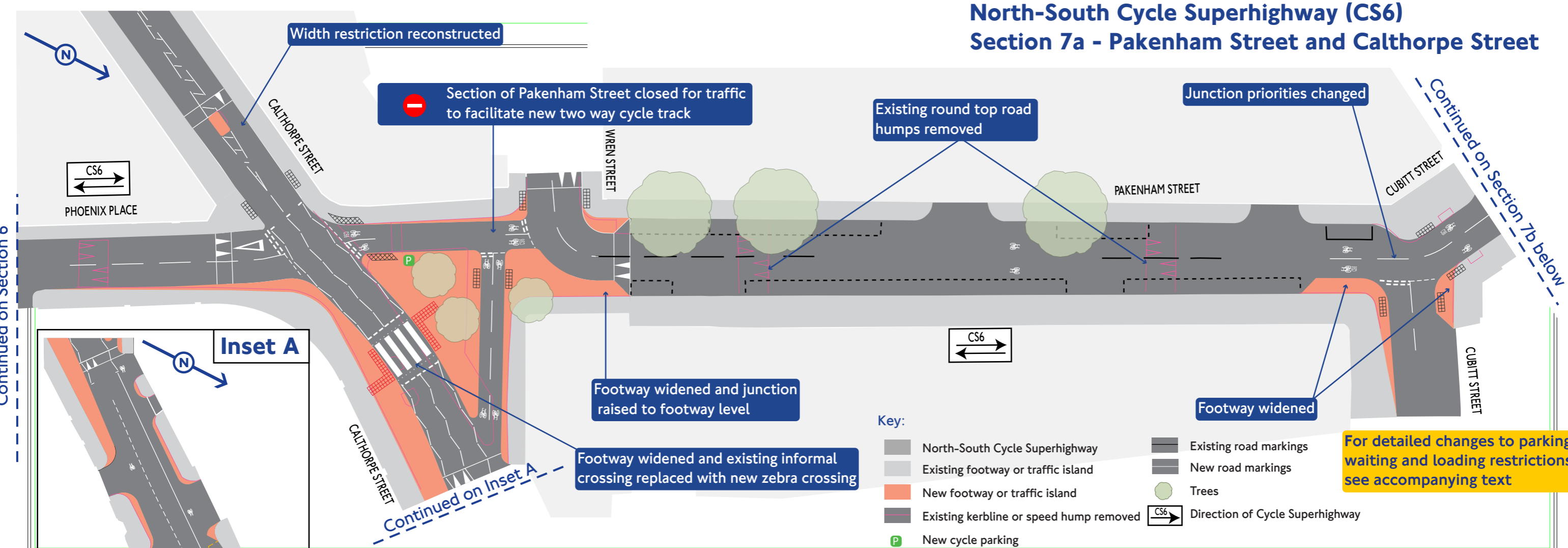
North-South Cycle Superhighway Extension Section 6a - Warner Street



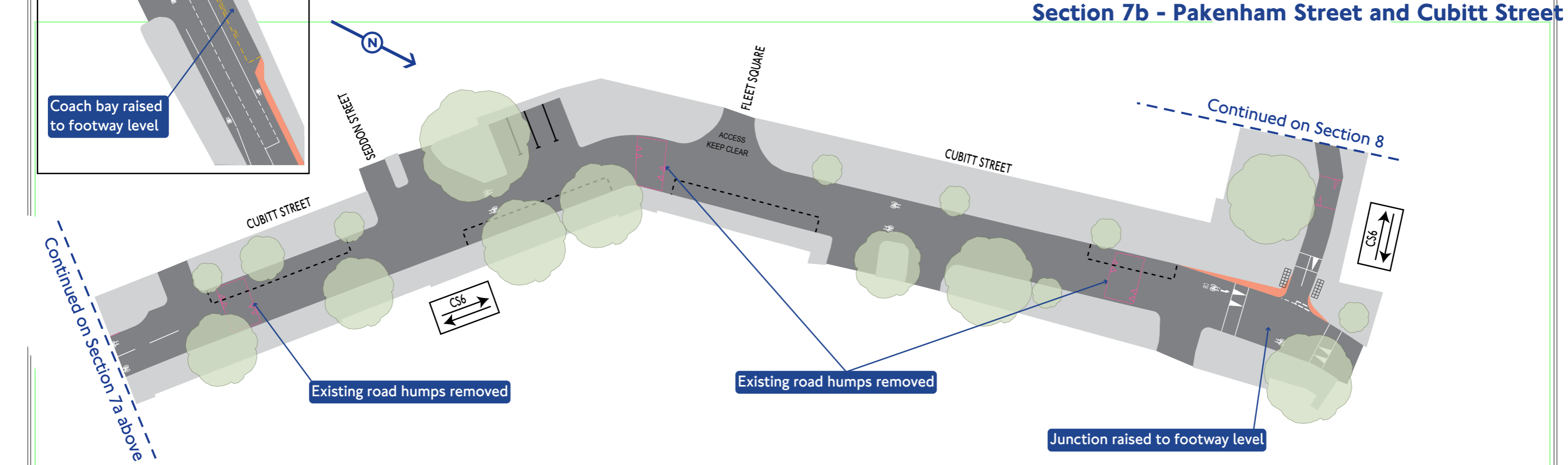
Section 6b - Phoenix Place



North-South Cycle Superhighway (CS6) Section 7a - Pakenham Street and Calthorpe Street



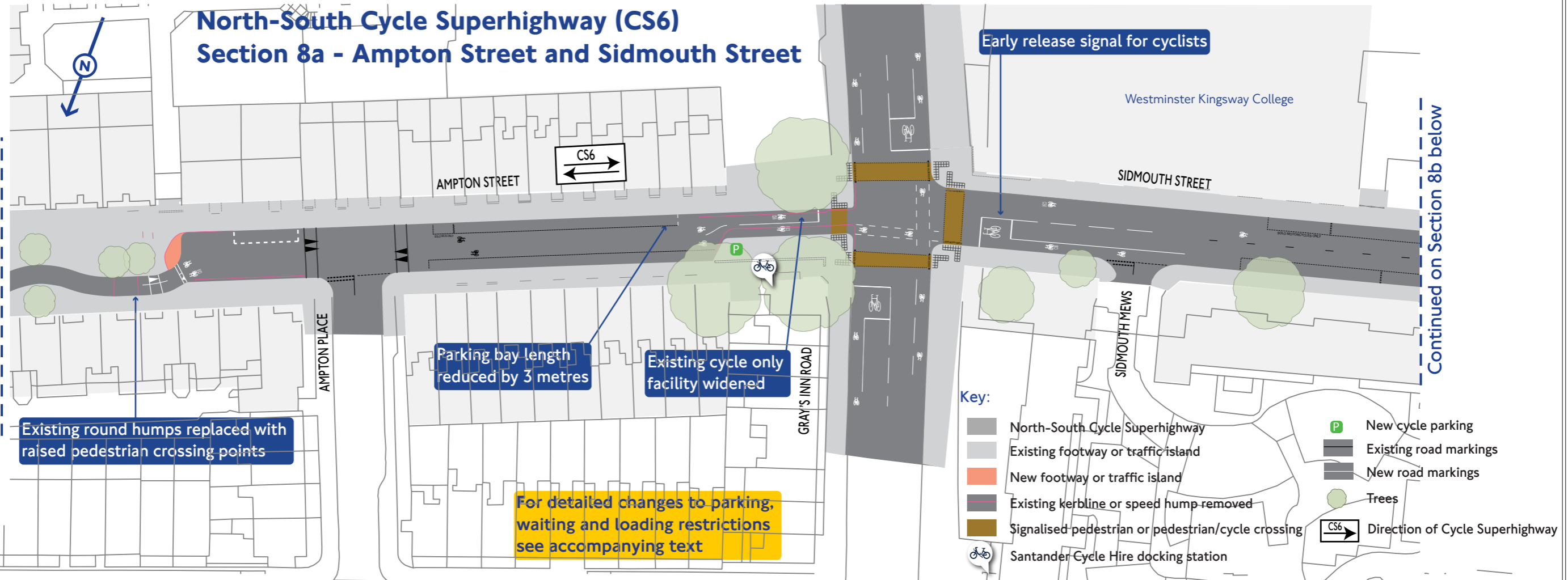
Section 7b - Pakenham Street and Cubitt Street



North-South Cycle Superhighway (CS6) Section 8a - Ampton Street and Sidmouth Street

Continued on Section 7

Continued on Section 8b below



Existing round humps replaced with raised pedestrian crossing points

Parking bay length reduced by 3 metres

Existing cycle only facility widened

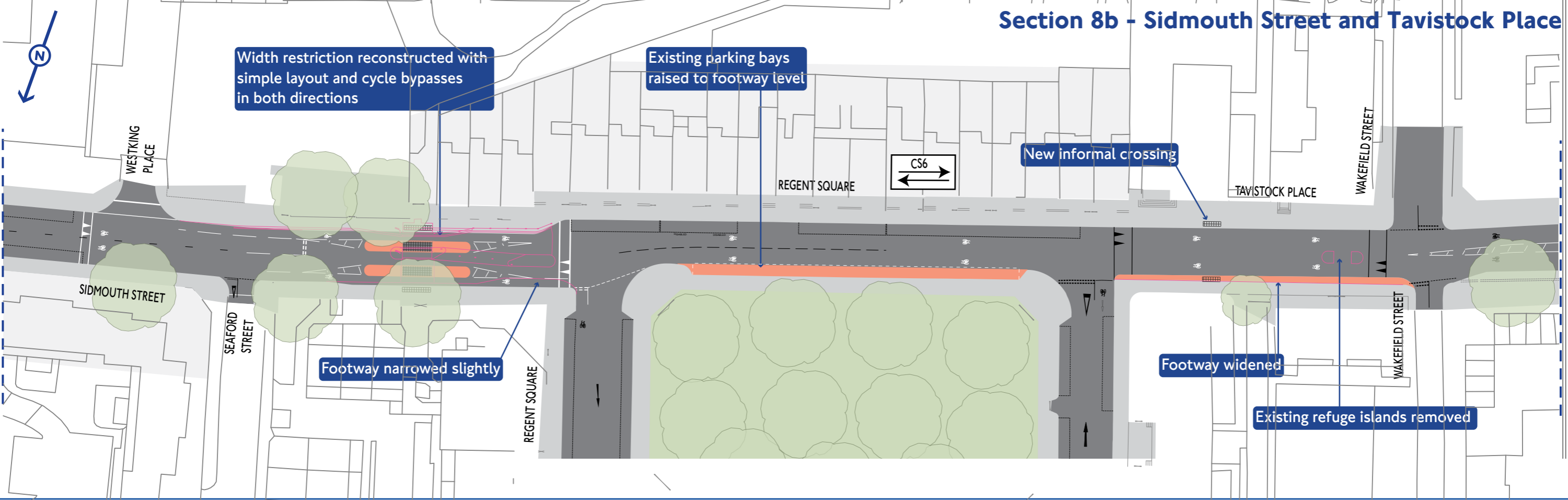
For detailed changes to parking, waiting and loading restrictions see accompanying text

Early release signal for cyclists

Section 8b - Sidmouth Street and Tavistock Place

Continued on Section 8a above

Continued on Section 9



Width restriction reconstructed with simple layout and cycle bypasses in both directions

Existing parking bays raised to footway level

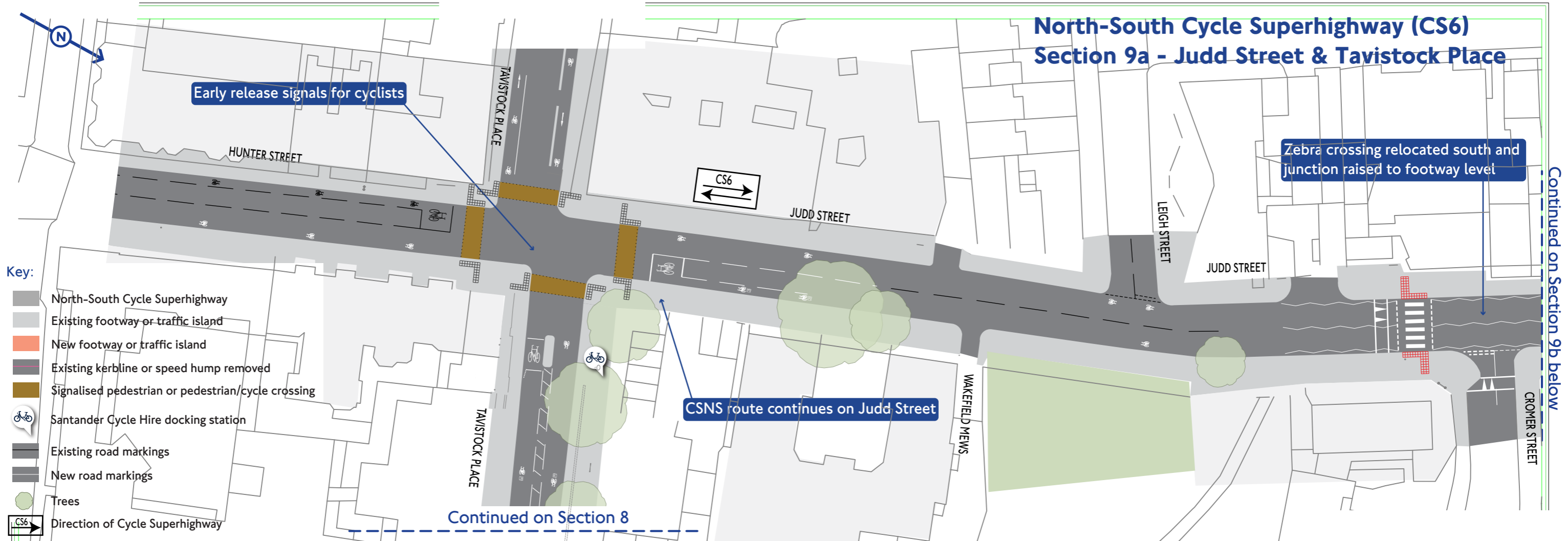
New informal crossing

Footway narrowed slightly

Footway widened

Existing refuge islands removed

North-South Cycle Superhighway (CS6) Section 9a - Judd Street & Tavistock Place



Section 9b - Judd Street

